

CRAFTING OUR VISION: CSUCI for 2030+

APRIL 24, 2024



Dr. Kaia Tollefson, Chief of Staff
Dr. Jennifer Perry, Executive Director of Regional
Educational Partnerships



Channel Islands
CALIFORNIA STATE UNIVERSITY

One Health as global initiative and CSUCI vision

health and wellbeing of
all is interconnected

- people (communities and individuals)
- environment (plants and animals)
- economy





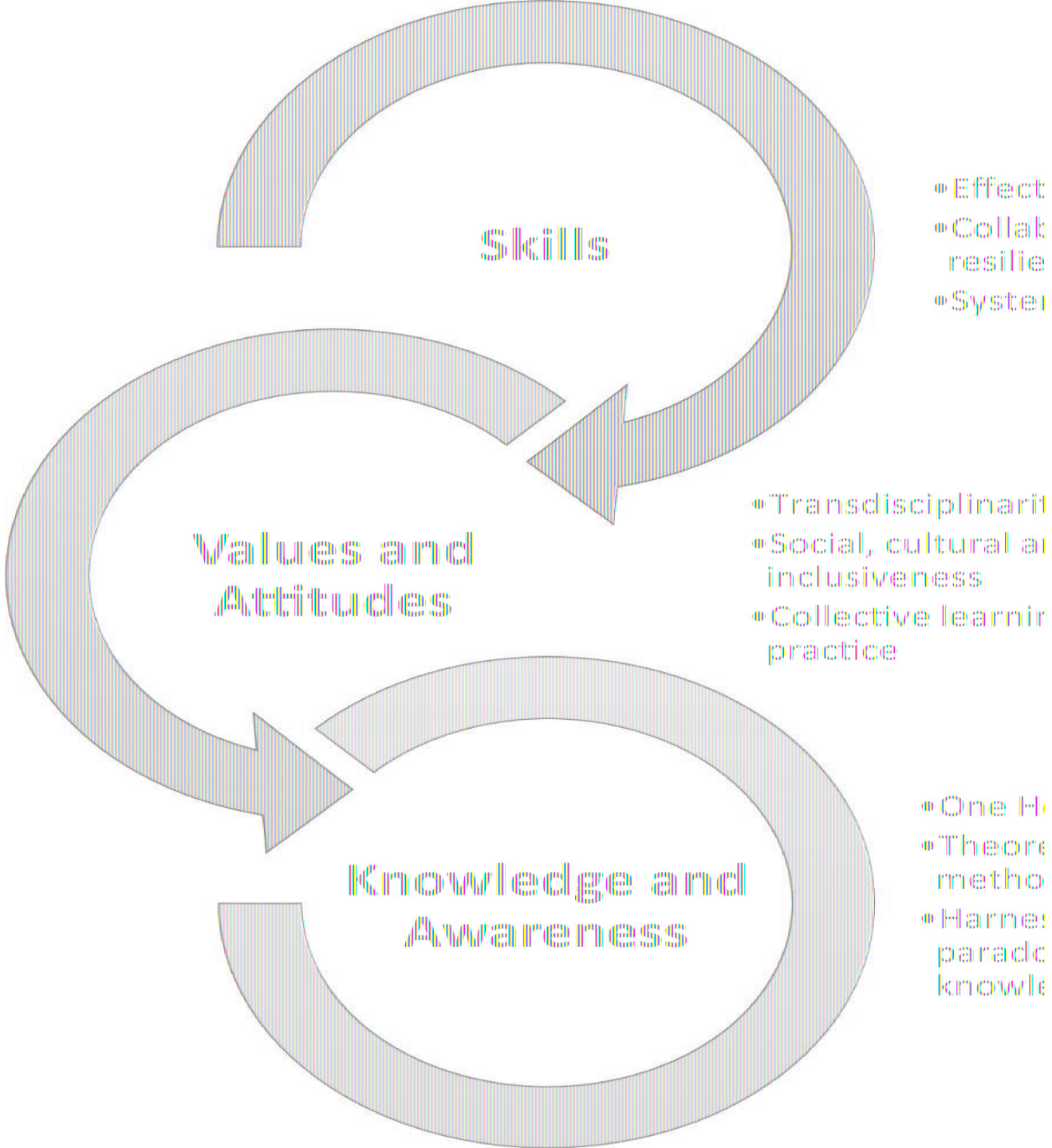
University of Alaska, Fairbanks

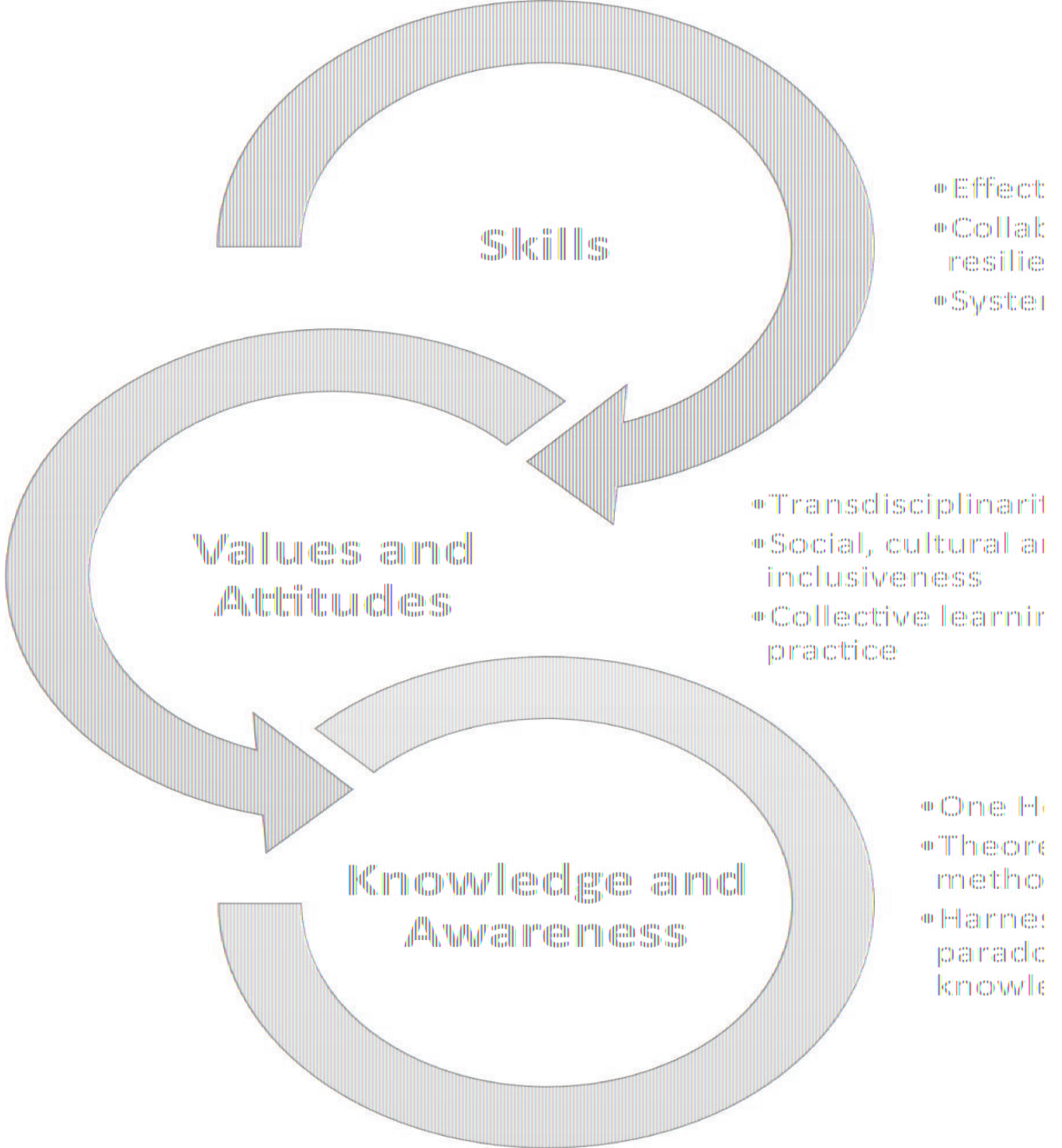
One Health Commission's mission:

- to improve health and well-being of all
- to promote resilience
- through education and networks of collaboration

One Health Core Competencies

Disciplinary-specific
expertise + transferable
knowledge and skill sets





One Health Core Competencies

Disciplinary-specific expertise + transferable knowledge and skill sets

=

effective workforce development, industries, and problem-solving



Channel Islands
CALIFORNIA STATE UNIVERSITY

Commonalities among universities that have adopted One Health

- community engagement and collaboration
- interdisciplinarity – across and between fields
- experiential learning in real-world settings
- emphasis on benefits to humankind, economy, and environment regionally and globally

CSUCI's Mission Pillars are in One Health!



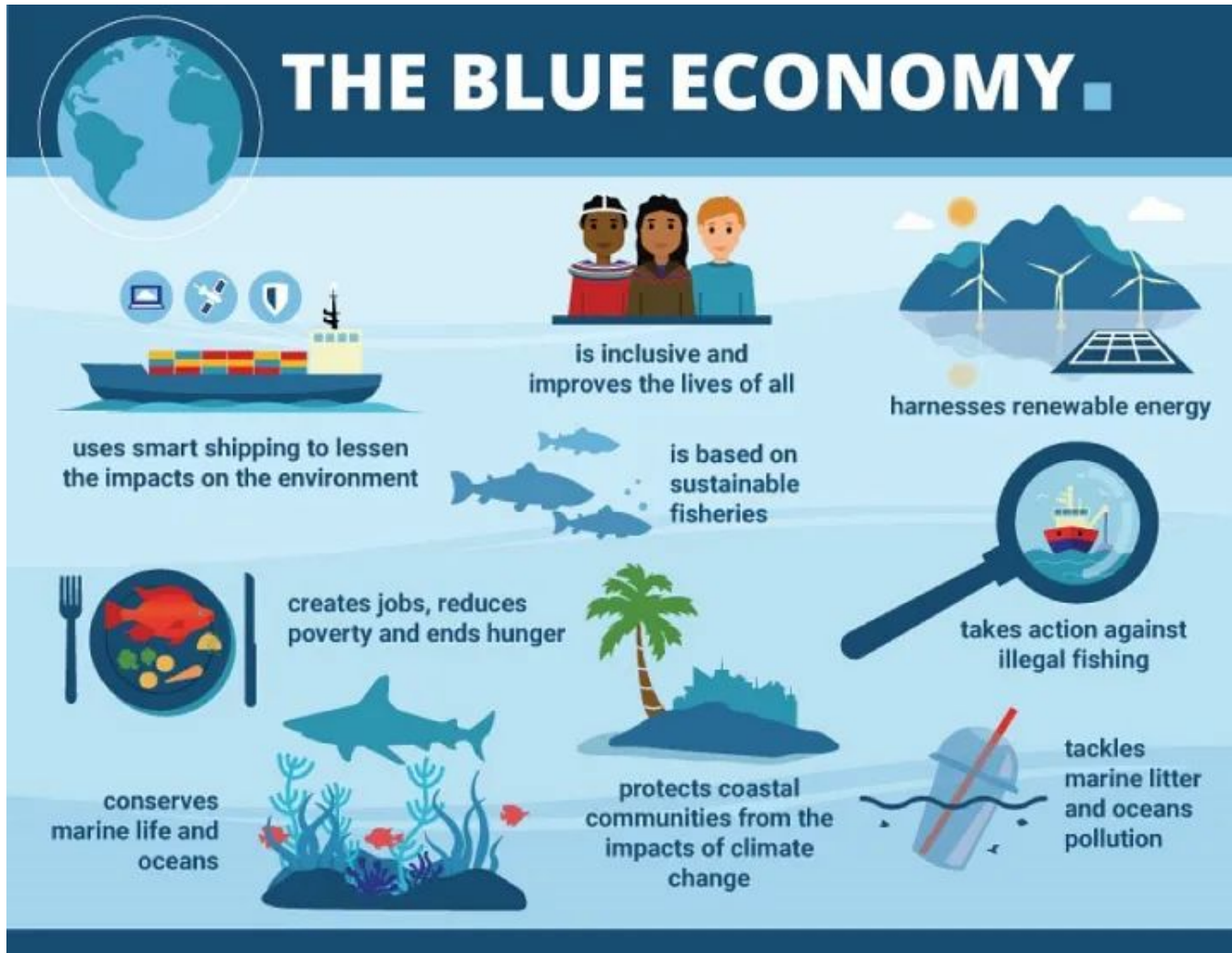
Santa Rosa Island Research Station



- educational programs and experiences
 - interdisciplinary and collaborative
 - experiential learning
 - career preparation and pipelines
 - personal transformation



- conservation projects with partners –
example: NOAA Marine Debris Removal Program



Ocean Collective on the Central Coast includes:

Commercial Fishermen of Santa Barbara

Santa Barbara City College

CSU Channel Islands

Other academic, industry, and conservation partners

Unique Sense of Place - Regional Assets

The Channel Islands protected by the Channel Islands National Park & Channel Islands Marine Sanctuary

Santa Monica Mountains that form the eastern border of campus

Port Hueneme as the only deep water port between San Diego and San Francisco

Naval Base Ventura County as a hub of Pacific Fleet operations and major employer

11th largest county in crop value

Biggest independent biotech firms in the world



Place-Based Campus Assets

Ancestral lands of the Chumash - home to the Barbareño Ventureño Band of Mission Indians and the sacred hill of sat^hwiwa

Santa Rosa Island Research Station as one of only 11 universities with a field station in a National Park

Channel Islands Boating Center in Channel Islands Harbor

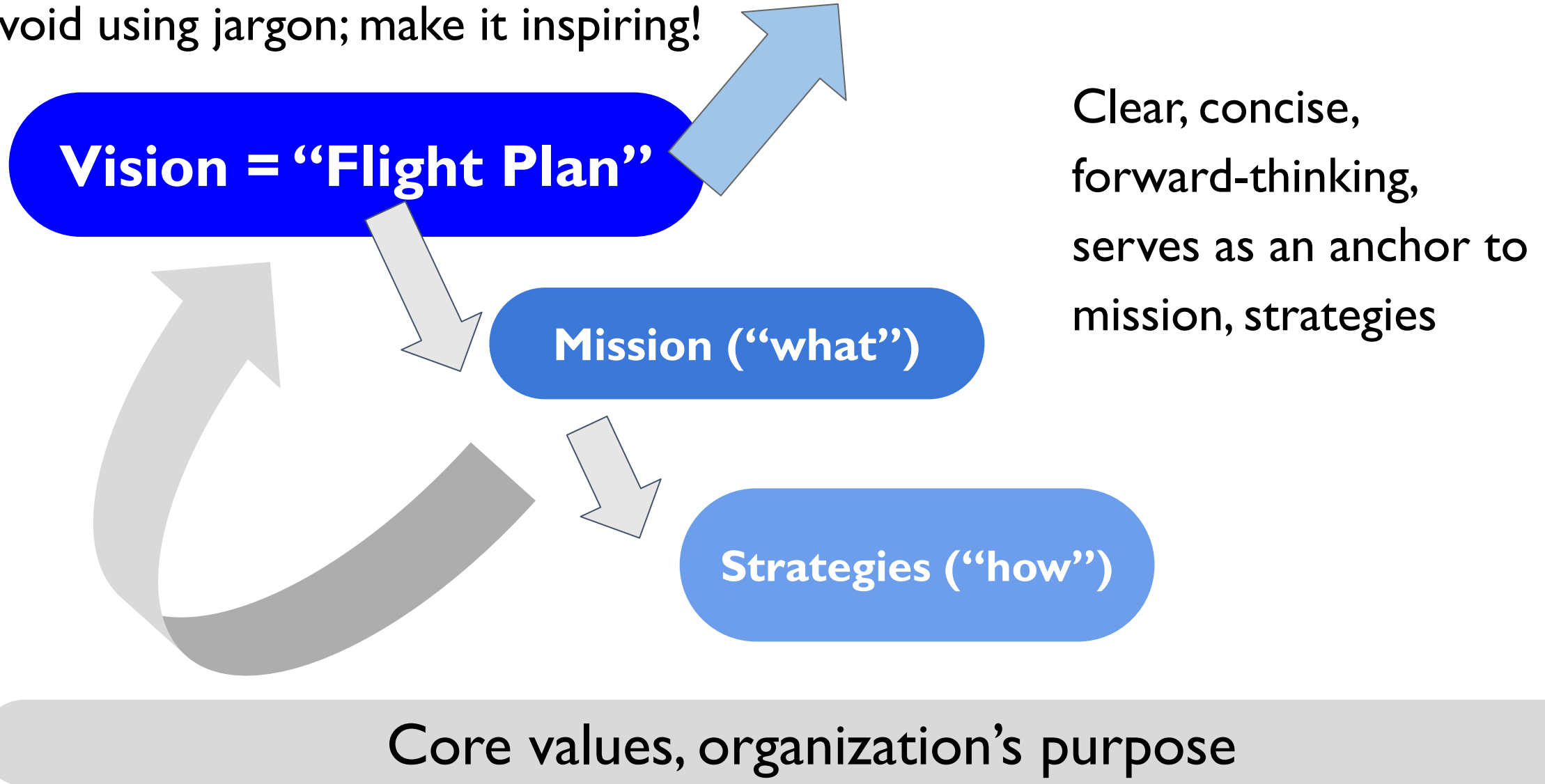
Future home for the Santa Barbara Zoo Conservation Center: First Zoo-Owned and Managed Facility on a University Campus

Engagement in Coastal Health & Ocean Affairs



Vision: What will Our Envisioned Future Look Like?

Avoid using jargon; make it inspiring!





[VISION CHAT](#) April 24 – May 3, 2024