

CSSA

CAL STATE STUDENT
— ASSOCIATION —



MISSION OF CSSA

What is CSSA?

The Cal State Student Association (CSSA) as a student-led organization strives to improve the lives of California State University (CSU) students by advocating for student needs and engaging students in systemwide, state, and federal higher education policymaking.



THE UNIFIED VOICE OF CSU STUDENTS

What is CSSA?

The Cal State Student Association (CSSA) is recognized by the **CSU Board of Trustees** and the **California State Legislature** as the official voice of CSU students.



VALUES OF CSSA

What is CSSA?

Social Justice & Educational Equity

CSSA will pursue its mission guided by the belief that social injustices resulting from various forms of oppression must be addressed. CSSA will advocate to remove barriers to success for underserved and marginalized communities within the CSU and systems that influence outcomes for CSU students.

Servant Leadership

CSSA will pursue its mission guided by the belief that our purpose in our leadership roles is to serve the communities to which we belong with empathy and care.

Stewardship

CSSA will pursue its mission through the responsible, transparent, and prudent management of human and financial resources entrusted to us by CSU students through the Student Involvement & Representation Fee (SIRF).



STUDENT INVOLVEMENT & REPRESENTATION FEE

What is CSSA?

SIRF

The passage of SIRF created a more independent and effective statewide student association with the main objective of expanding CSSA's efforts to serve all CSU students. The fee creates direct accountability of CSSA to the students it serves by giving students a choice to participate (or not) in SIRF.

Representation & Reliance

Representation from all 23 CSU campuses through Associated Students, with a reliance on democratic process to serve as representative voice of all CSU students

Status

Independent 501(c)(3) nonprofit auxiliary of the CSU Chancellor's Office.

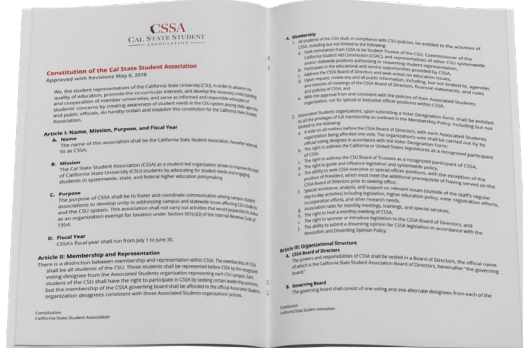


CSSA Governance Structure

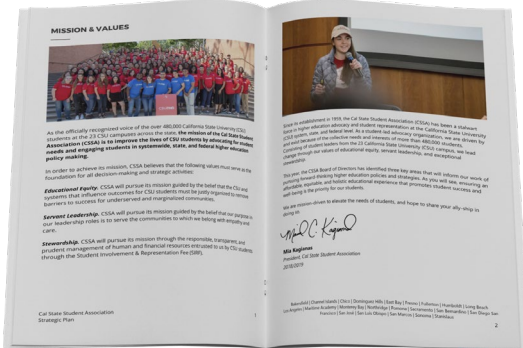
GOVERNING DOCUMENTS

What is CSSA?

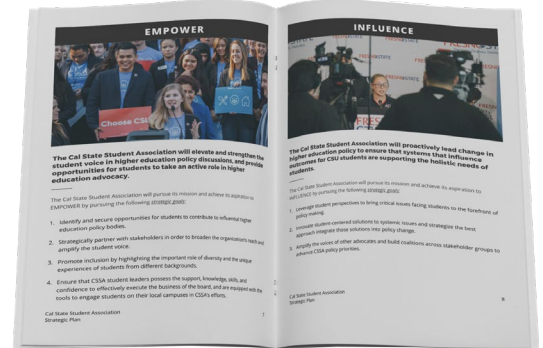
Constitution



Policies



Policy Agenda





EXECUTIVE OFFICERS 2023/2024

Who is CSSA?



Dominic Treseler
President



Varenya Gupta
Chair



Alex Jimenez Cruz
Vice President of
Finance



**Samantha Alvarez
Chavarria**
Vice President of
Legislative Affairs



Gali Pompa
Vice President of
Systemwide Affairs



GOVERNING MEMBERS

Cal State Student Association





ROLES & RESPONSIBILITIES OF GOVERNING MEMBERS

- Review all relevant material before plenary meetings
- Attend all regular and special committee meetings
- Bring forward issues that are within the scope of the committee for discussion
- Gather ideas and feedback from relevant stakeholders
- Provide your unique campus perspective to systemwide decisions
- Participate in advocacy efforts related to actions taken by the organization

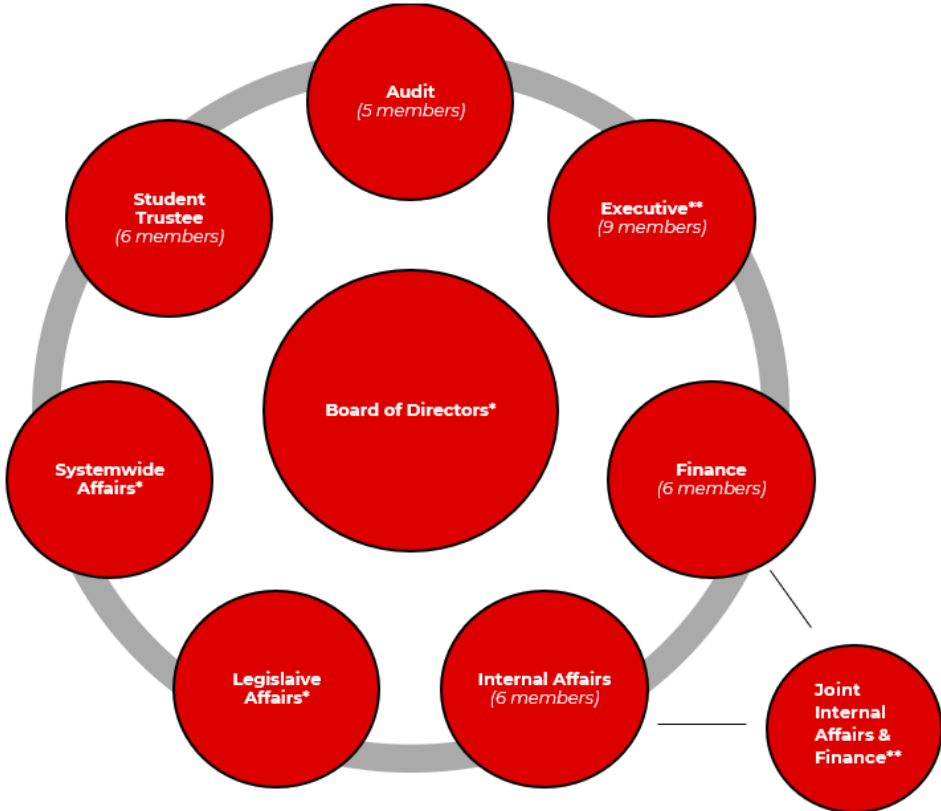


ROLES & RESPONSIBILITIES OF EXECUTIVE OFFICERS

- Provide vision and support to the Board
- Carry out vision of the Board as advocates for CSU students
- Amplify the student voice in systemwide and legislative affairs
- Manage Board and committee business
- Represent the organization to stakeholders
- Oversee day-to-day operations of functional areas



CSSA COMMITTEE STRUCTURE



* Committee of the whole = one representative from each 23 CSU campus

**Predetermined members as indicated by the Constitution



AS/I's and CSSA





STRUCTURE

| CAMPUS AS/I | CSSA |
|---|---|
| <ul style="list-style-type: none">• Auxiliary of campus | <ul style="list-style-type: none">• Auxiliary of the CSU Office of the Chancellor |
| <p style="text-align: center;">Similarities</p> <ul style="list-style-type: none">○ Committee system○ CSU Minimum Qualifications for Student Office Holders○ Gloria Romero Open Meetings Act of 2000○ IRS 501(c)(3)○ Professional staff○ Student Board of Directors○ Student Executive Officers○ Student assistants | |



FUNDING

| CAMPUS AS/I | CSSA |
|--|--|
| Student Fee Revenue (<u>Category II - Mandatory</u>) | Student Involvement & Representation Fee (SIRF) (<u>Category VI - Opt Out</u>) |
| <p style="text-align: center;">Similarities</p> <ul style="list-style-type: none">● Student dollars● Impacted by enrollment● Provide services to students | |



BUDGET

| CAMPUS AS/I | CSSA |
|---|--|
| <ul style="list-style-type: none">● Events● Direct services● Programs● Provide funding | <ul style="list-style-type: none">● Advocacy-centric● Indirect services● Minimal events● Meetings |
| <p style="text-align: center;">Similarities</p> <ul style="list-style-type: none">● Approval required● Board development● Officer scholarships● Overhead & Operations● Salaries & benefits | |



PROGRAMS

| CAMPUS AS/I | CSSA |
|---|--|
| <ul style="list-style-type: none">● Campus Activities Board● Student Union● Recreation Center● Children's Center● Food Pantry● Funding to campus partners● Leadership opportunities● Legislative training● Student employment● University committees● Campus-based programs/initiatives | <ul style="list-style-type: none">● Leadership development● Advocacy conferences and training<ul style="list-style-type: none">-CSUnity & CHESS● CSU systemwide advocacy<ul style="list-style-type: none">-Systemwide Committees-Statewide task forces● Federal advocacy● Statewide advocacy● CSU Budget advocacy● Systemwide committees● Legislative advocacy |



ISSUES

| CAMPUS AS/I | CSSA |
|---|--|
| Does it impact the students on your campus? | Does it impact CSU students? |
| Should we? <ul style="list-style-type: none">● Mission alignment● Scope● Impact | Can we? <ul style="list-style-type: none">● Mission alignment● Policy Agenda alignment● Sphere of influence● Resources (time) |



CSSA Policy Agenda 2023



Priority 1: Address the total cost of attendance for CSU students



- Ensure the CSU remains accessible and affordable for all students.
- Ensure access to high quality student support services that address student's access to food, housing availability and affordability, and technology.



Priority 2: Ensure students have access to high quality wellness and mental health support services



- Support campus and systemwide efforts that address increasing access to counseling and psychological services
- Ensure students have access to quality and affordable wellness services



Priority 3: Ensure the academic success and holistic educational experience of all CSU students



- Support systemwide efforts to address diversity, equity, inclusion, and belonging within the CSU community
- Ensure students have the ability to thrive academically in a safe and supportive environment



Priority 4: Foster inclusive engagement for students to find agency in their campus



- Ensure students are regarded as equal stakeholders within the CSU community

The Policy Agenda Form is Now Open

- In order to best serve the mission of the Cal State Student Association (CSSA), it is important that we hear directly from students about issues concerning both CSU students and the CSU system.
- Each year, the CSSA adopts a policy agenda that prioritizes what issues the organization will work on.
- All ideas must be submitted by September 15, 2023. Should you have any questions please email info@calstatestudents.org.



Scan the QR Code to access the
policy agenda form



Systemwide Engagement Opportunities



CIVIC

College Involvement And
Values Impacting Communities



CIVIC College Involvement And Values Impacting Communities



Civic Engagement goes beyond voter registration



Need for further student participation in advocacy efforts



Role of the Legislative Affairs Committee



Way to directly measure student engagement year to year



Recognition at the end of the year



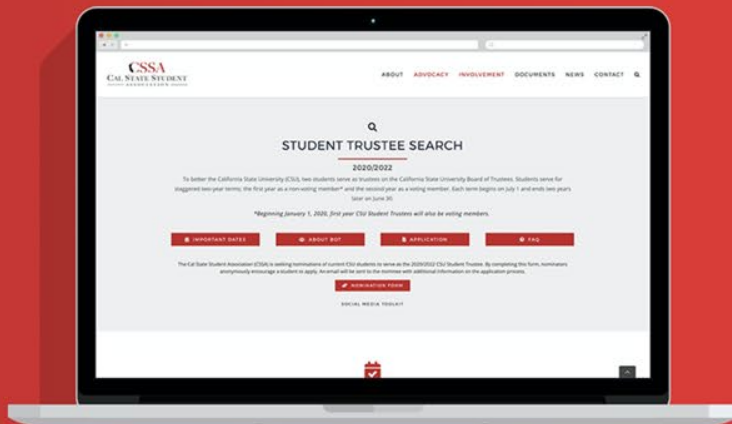
Systemwide Opportunities: Search for the 2024/2026 Student Trustee

Search for the 2024/2026 Student Trustee



APPLICATION PROCESS

How to Apply to be the Next Student Trustee





Addressing Board of Trustees

There are two ways of making a public comment during meetings:

1. Submitting written comments to the trustee secretariat that will be given to board members before the meeting.
Deadline for public comment is typically 12pm the Monday before the Tuesday/Wednesday BOT meeting.
2. Public comments during the meeting can be made in person or virtually by providing written request by **12pm on the Monday before the meeting.**

Email the Trustee Secretariat at trusteesecretariat@calstate.edu if you wish to speak virtually or in-person.



THIS IS CIVIC POINTS!!!!!!



Systemwide Committees



SYSTEMWIDE COMMITTEES

Admission Advisory
Council (2)

CSU General Education
Advisory Committee (1)

ASSIST Policy Advisory
Committee (1)

CSU Institute for Teaching
and Learning Board (1)

CSU Services to Students with
Disabilities Advisory
Committee (5)

CSU Student Health Services
Advisory Committee (2)

CSU Student Mental Health
Services Advisory Committee
(2)

CSU Summer Arts Advisory
Council (2)

CSU Systemwide Budget
Advisory Council (2)

Classroom Disruption and
Interpersonal Conflict
Committee (1)

AB 928 Implementation
Committee (1)

CSU Student Success Network
Advisory Board (1)

Advisory Council on Student
Advising (2)

Dominic Quan Treseler

President

dquantreseler@calstatestudents.org