



Information for ASI Student Government - October 2022

UNIVERSITY POLICE DEPARTMENT

Chief Drake Massey

Agenda

What this presentation will cover

- Welcome & Introductions
- UPD Mission & Philosophy
- UPD Jurisdiction
- UPD & CAPS Partnership
- Crisis Intervention Team (CIT)
- Safe Harbor / VCFJC Partnership
- EMT Program with VCEMS
- UPD Budget Overview
- UPD Staffing Model
- Q&A



POLICE COMMAND STAFF



Drake Massey

Interim Chief of Police



Christopher Jetton

Lieutenant - Police Administration



Garrett Brownfield

Acting Lieutenant - Police Operations



UPD's Core Mission

The California State University Channel Islands Police Department, in partnership with its student-centered community ensures for a safe and secure campus environment.

UPD's Core Philosophy

- Accept nothing less than excellence. What we do is important. What we do makes a difference.
- Support civility, understanding and mutual respect towards all persons.
- Focus on public safety issues through the delivery of services that includes aspects of traditional law enforcement, as well as prevention, problem-solving, community engagement, and partnerships.
- Every staff member, both individually and collectively, has the authority to solve problems and make operational decisions suitable to their roles.
- Leadership is required and rewarded at every level, with administrators, supervisors, police officers, and dispatchers held accountable for decisions and the effects of their efforts at solving public safety issues.

Education Based Enforcement Philosophy

1,170 Total number of officer initiated stops conducted
YTD: 1/1/22-10/17/22

975 Total number of warnings issued
YTD: 1/1/22-10/17/22

122 Total citation for an infraction
YTD: 1/1/22-10/17/22

68 Total warrant & fresh arrests from stops
YTD: 1/1/22-10/17/22





BY THE NUMBERS...

August 2021 to August 2022



1,004 911 Calls
11,637 Admin Calls



33,558 Total Incidents



131 Medical Services
322 Crime Reports



184 Total Arrests
19 Felony & 165 Misd



**43 Welfare Checks / Emotionally
Disturbed Person Calls**



10 Mental Health Hospitalizations

CSUCI Property Boundary

California Penal Code Section 830.2(c) states that the following persons are peace officers whose authority extends to any place in the state. "A member of the California State University Police Departments appointed pursuant to Section 89560 of the Education Code, provided that the primary duty of the peace officer shall be the enforcement of the law within the area specified in Section 89560 of the Education Code."



UPD / CAPS Partnership



Dr. Kirsten Olson

Director of Counseling and Psychological Services

5150
HOLDS

CARE/BIT
Threat
Assessment



Mental
Health
Training

Peer
Support



Counseling and Psychological Services

CAPS Services

- Urgent Care/Crisis Intervention
- Short-term Individual Counseling
 - Group Therapy
 - Couples Counseling
 - Outreach Activities
- Consultation for Faculty & Staff
- Community Referral Services
- Mental Health Peer Program

Services available in Spanish by appointment

Services available on campus and telehealth

Counseling And Psychological Services (CAPS) **24/7 CRISIS INTERVENTION**

CALL OR TEXT TO CONNECT WITH A COUNSELOR FOR IMMEDIATE SUPPORT!

24/7 CRISIS SUPPORT

(855) 854-1747

- **Call the direct crisis number at 855-854-1747**
- **OR call the CAPS main office at 805-437-2088 and select option 2 to connect to a crisis counselor.**

NATIONAL TEXT LINE

741741

- **Text "Hello" to: 741741**
- **A crisis counselor receives the text and responds quickly**

If you are experiencing an emergency, please call the Police immediately by dialing 9-1-1

OFFICE HOURS

**BELL TOWER EAST 1867
MONDAY-FRIDAY
8 a.m. - 5 p.m.**

CONTACT

**CAPS@CSUCI.EDU
805-437-2088
WWW.CSUCI.EDU/CAPS**

SOCIAL

@CSUCICAPS
 

The University encourages persons with disabilities to participate in its programs and activities. If you anticipate needing any type of accommodation, or have questions about the physical access provided, please contact Disability Accommodations and Support Services at accommodations@csuci.edu or call 805-437-3331 as soon as possible, but no later than seven (7) business days prior to the event.



COUNSELING & PSYCHOLOGICAL SERVICES
CHANNEL ISLANDS

Office Hours

Monday - Friday: 8-5

Contact Information

caps@csuci.edu

805-437-2088

www.csuci.edu/caps

Bell Tower East 1867

Social

@csucicaps



California State
University

**COUNSELING &
PSYCHOLOGICAL
SERVICES**

C H A N N E L
I S L A N D S

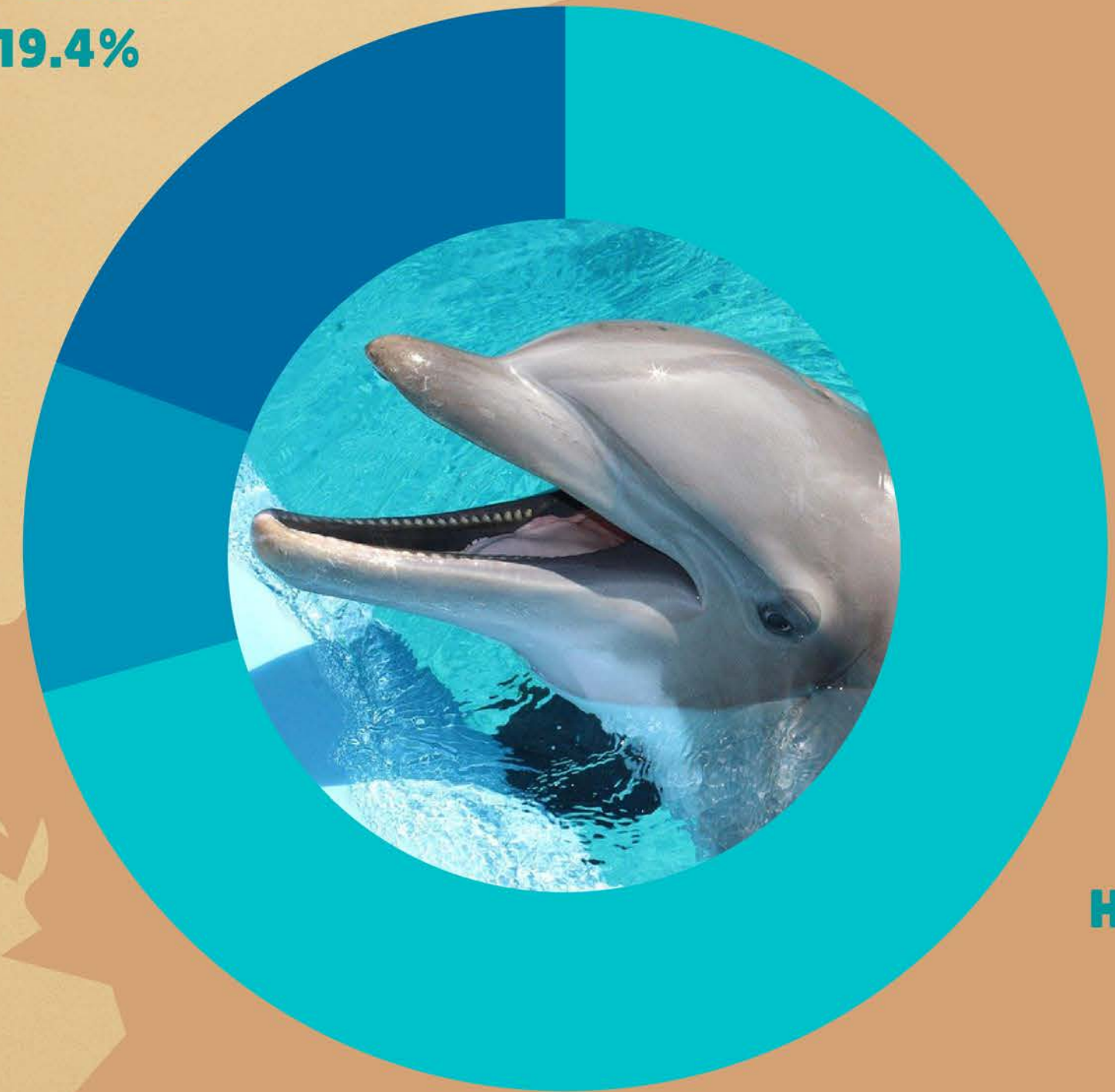
**URGENT CARE/CRISIS INTERVENTION SERVICES
ARE AVAILABLE WITH CAPS CLINICIANS
MONDAY – FRIDAY 9:00AM – 4:00PM**

GF CA LEG

19.4%

GF CSUCI

9.9%



Health Fee
70.7%

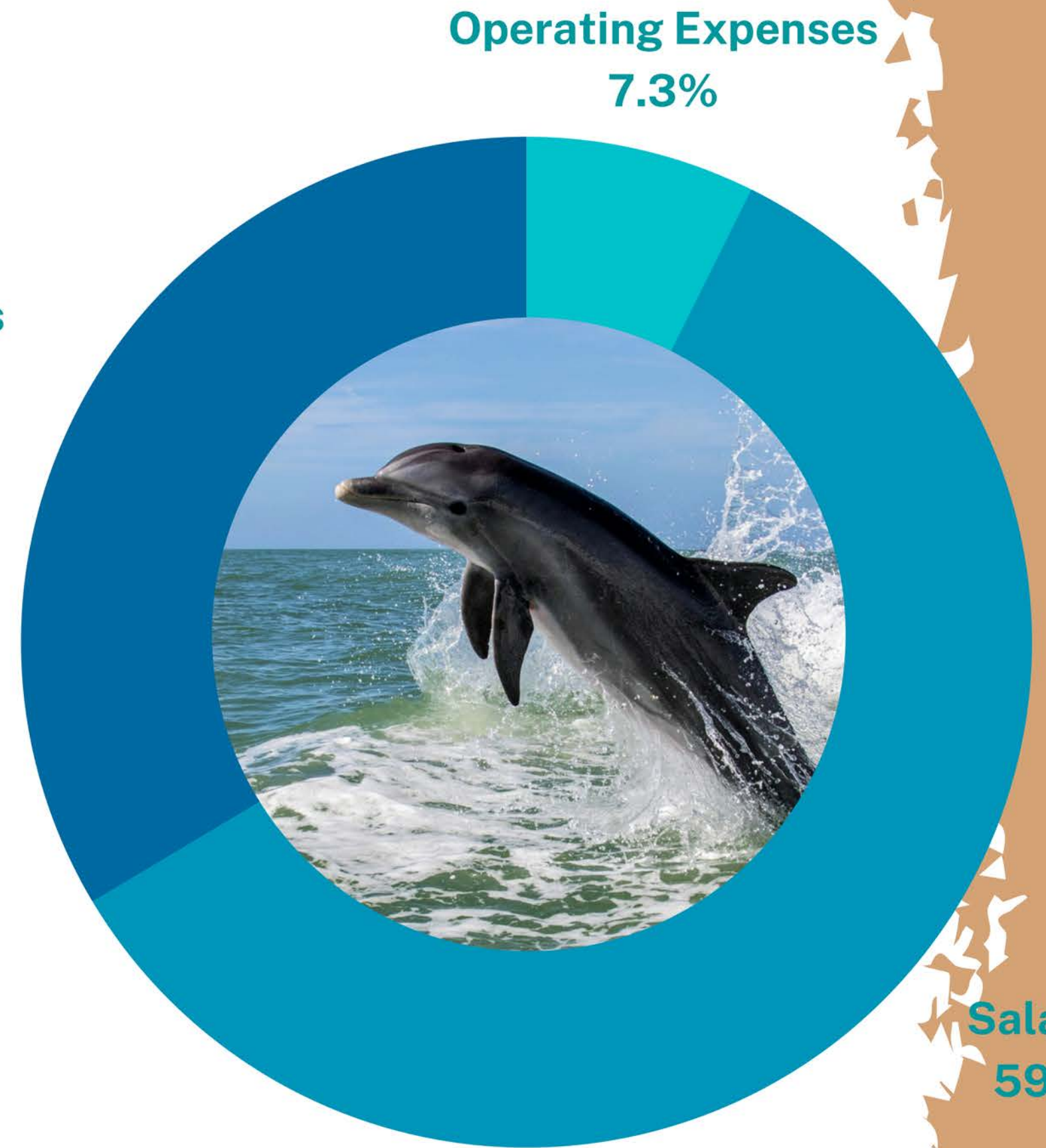
CAPS Funding Sources 22–23

- **Student Health Fee – \$947K**
- **GD901 – CSUCI – \$132.4K**
- **GD901 – Legislative Allocation – \$260K**

CAPS EXPENSES 2022-23

●	Salaries:	\$791.5K
●	Benefits:	\$449.5K
●	Operating Expenses:	\$98.3K
●	Total:	\$1,339,391

Benefits
33.6%





CSU CHANNEL ISLANDS POLICE ARE PART OF VENTURA COUNTY LAW ENFORCEMENT'S CRISIS INTERVENTION TEAM (CIT). ALL OFFICERS ATTEND A 40 HOUR CIT ACADEMY AND ANNUAL REFRESHER TRAINING

VENTURA COUNTY BEHAVIORAL HEALTH

NAMI National Alliance on Mental Illness

Ventura County

Aurora Vista Del Mar Behavioral Health Care

Hillmont Psychiatric Center

USA MENTAL HEALTH FIRST AID®

SENECA FAMILY OF AGENCIES | UNCONDITIONAL CARE

Tri-Counties Regional Center

CIT Program

VPD **VCSO** **OPD** **SPPD** **PHPD** **CHP** **VCPA** **NBVC** **CSUCI PD** **VCCCD PD**

Ventura County Law Enforcement's Crisis Intervention Team





Campus Budget 22-23

All funds - \$196.5 M
UPD - \$3.5 M



Funding Sources 21-22

- Campus funding - \$3.2 M
- Parking, HRE and campus event cost recovery - \$306K
- External Revenue - VCCCD
Contract and events - \$100K
- Site Authority cost recovery - \$98K
- CRU costs reimbursed by
Chancellor's Office - \$10K



Expenses 21–22

Salaries and Wages: \$2.2 M

Benefits: \$944K

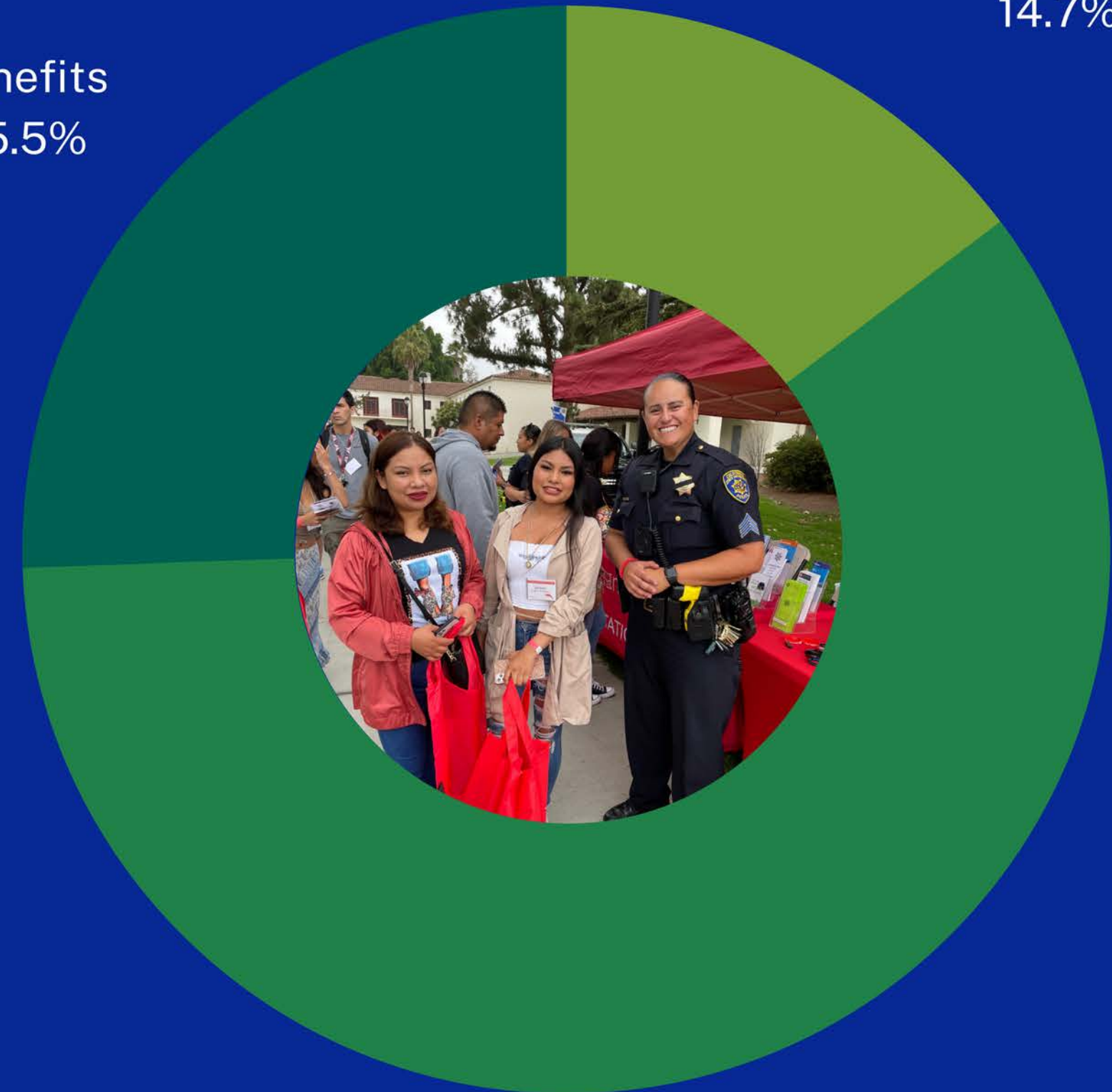
Operating Expenses: \$544K

Operating expenses include:

- EMT supplies and equipment
- Training for officers and dispatchers, and related expenses
- Necessary contracts for software and equipment
- Uniforms/equipment
- Vehicle gas and maintenance
- Community events

Benefits
25.5%

Operating Expenses
14.7%

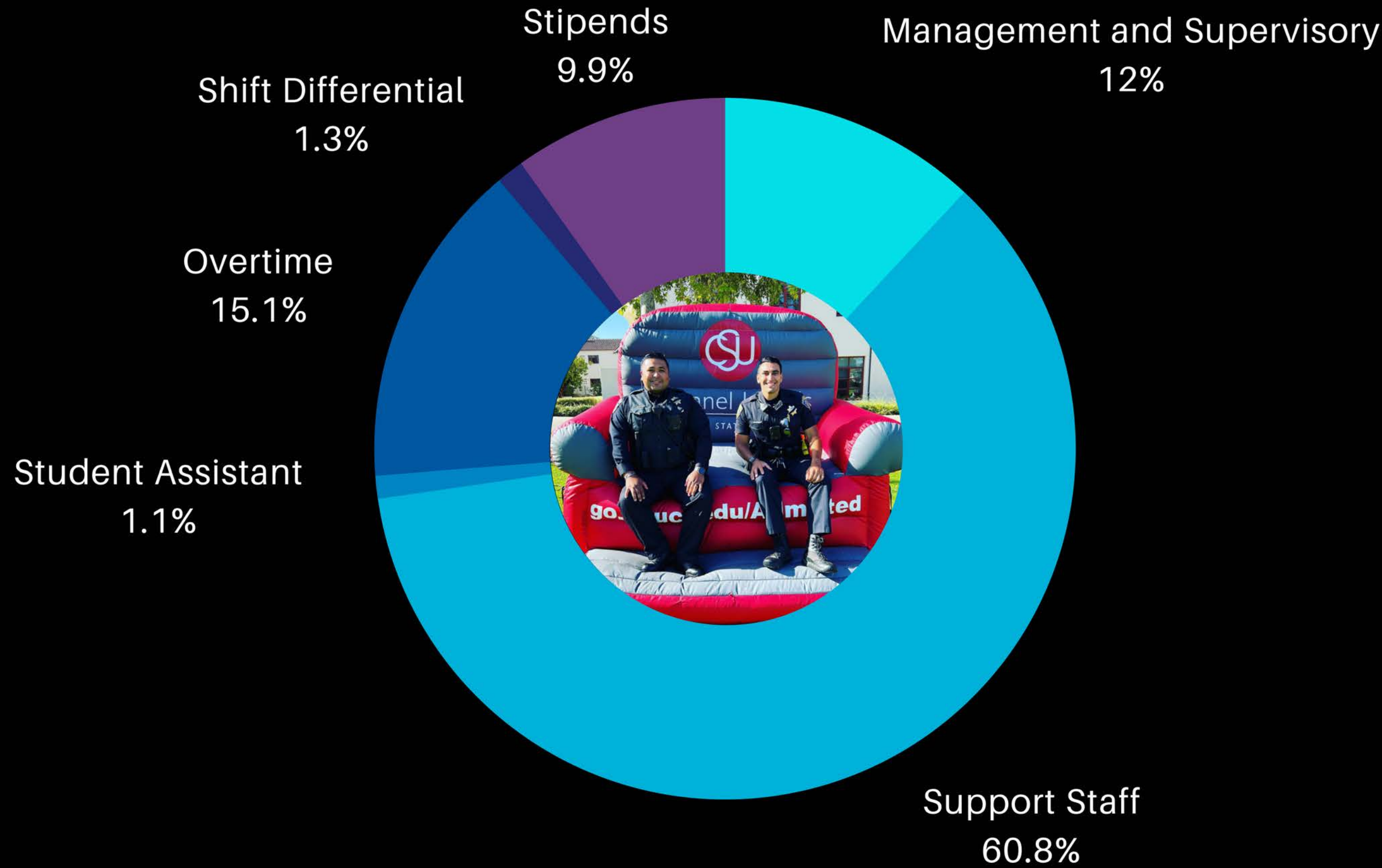


Salaries and Wages
59.8%

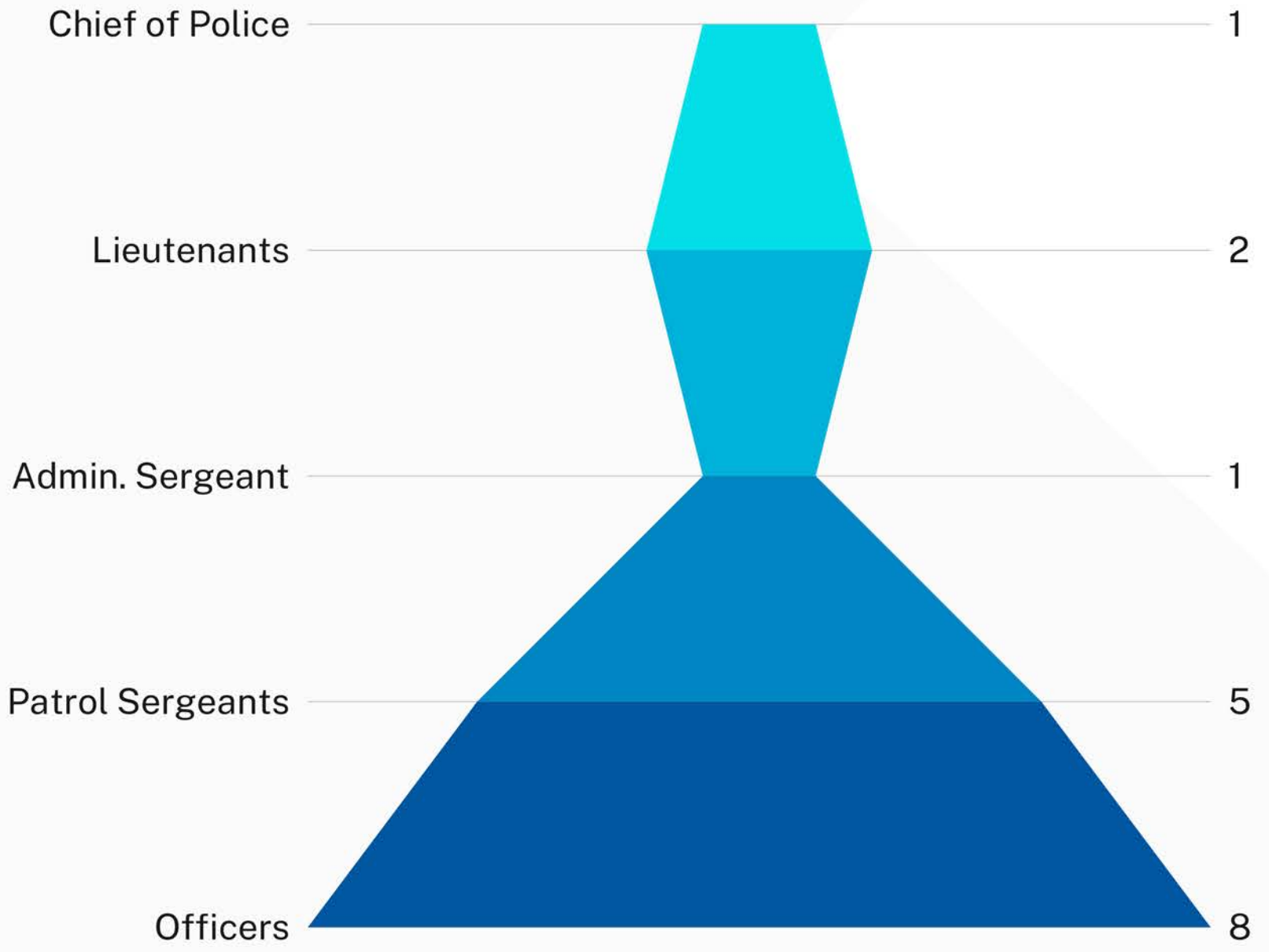
Salary Breakdown 21-22

Management and Supervisory
= Chief, Lieutenants &
Emergency Management

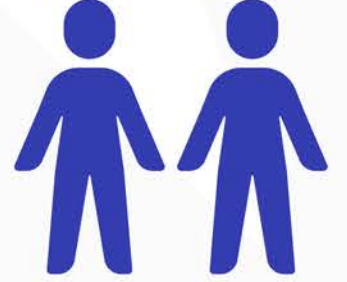
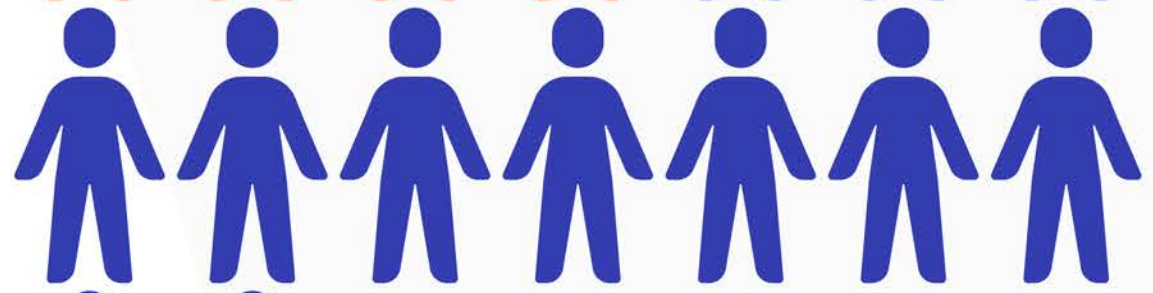
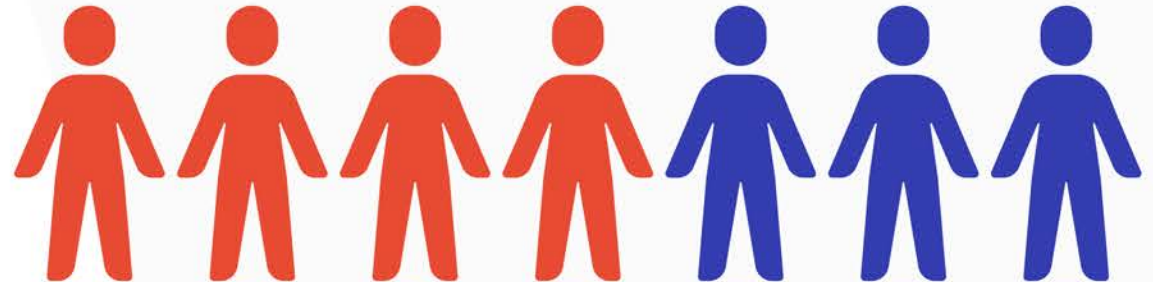
Support Staff = Officers,
Sergeants and Dispatchers



CSUCI POLICE SWORN STAFF



ADMIN



PATROL

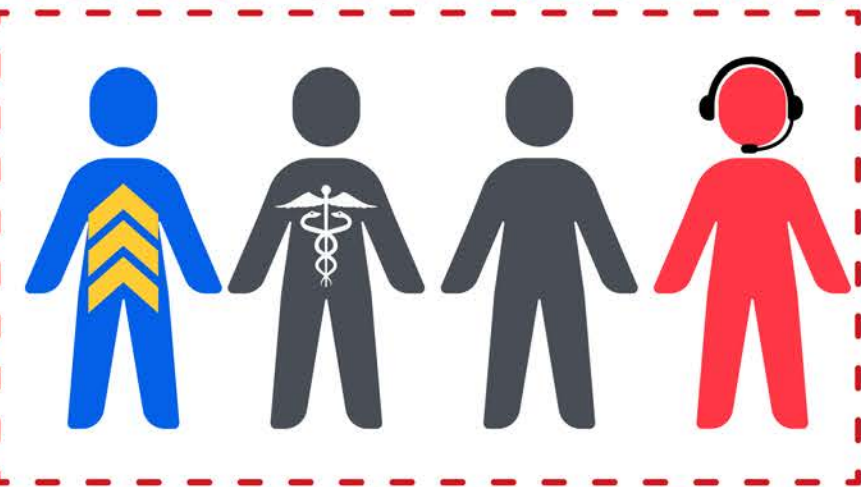
PATROL DEPLOYMENT – 4 SHIFTS



FRONT OF WEEK DAYS

1 SERGEANT*
2 OFFICERS *
1 DISPATCHER

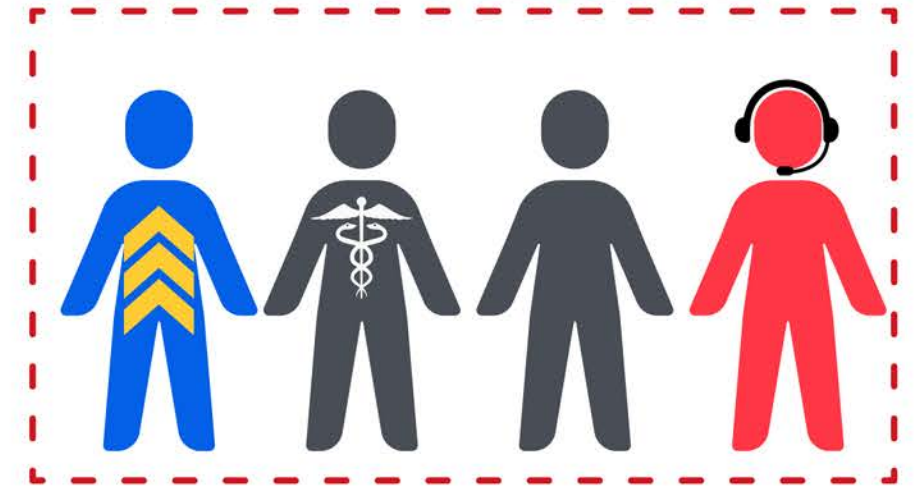
***AT LEAST 1 EMT**



BACK OF WEEK DAYS

1 SERGEANT*
2 OFFICERS *
1 DISPATCHER

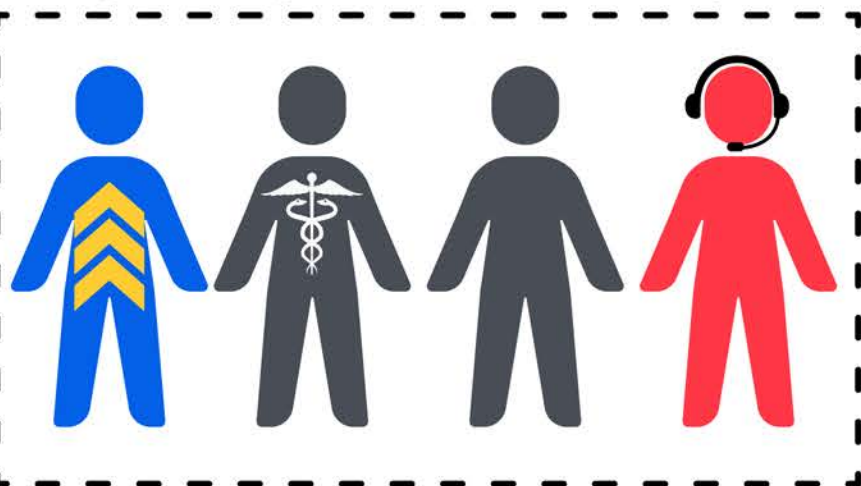
***AT LEAST 1 EMT**



FRONT OF WEEK NIGHTS

1 SERGEANT*
2 OFFICERS *
1 DISPATCHER

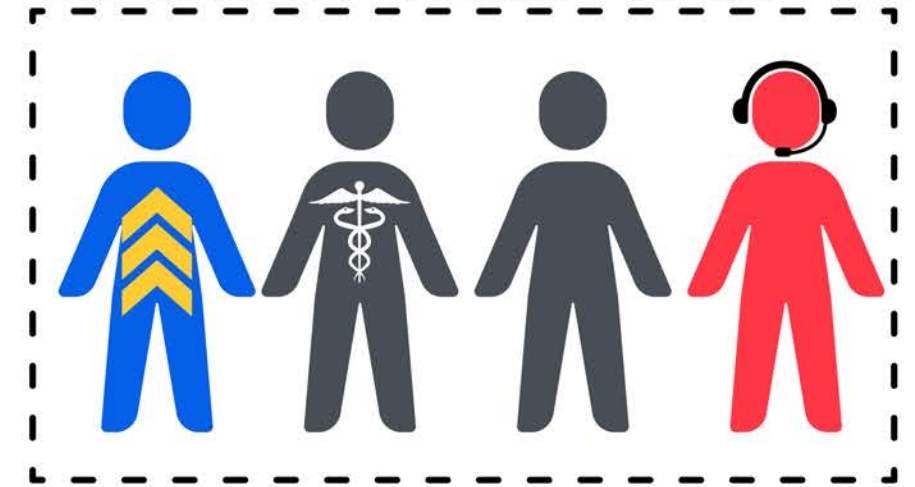
***AT LEAST 1 EMT**



BACK OF WEEK NIGHTS

1 SERGEANT*
2 OFFICERS *
1 DISPATCHER

***AT LEAST 1 EMT**



Why are we here?

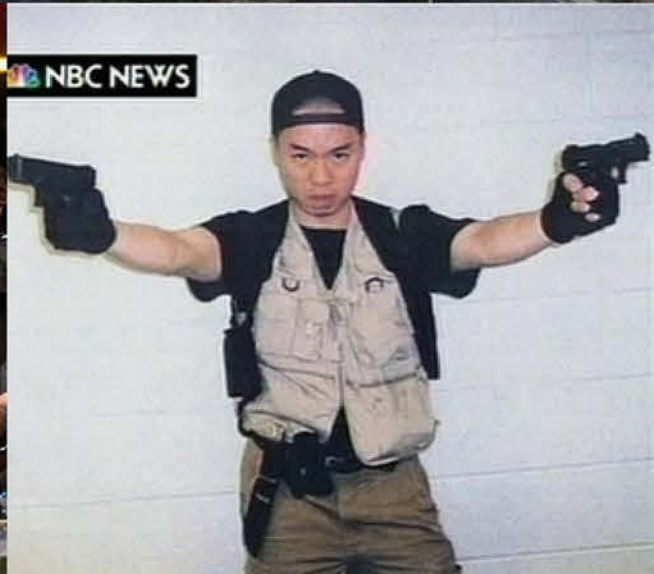


MASS SHOOTING AT CALIFORNIA BAR

GOOGLE EARTH



BORDERLINE BAR & GRILL



NBC NEWS

Thank you!

We are always open to questions and continued conversations.

